

# FYR-TEK



**SPECIALIZING IN  
PROVIDING  
HORTON  
EMERGENCY VEHICLES**

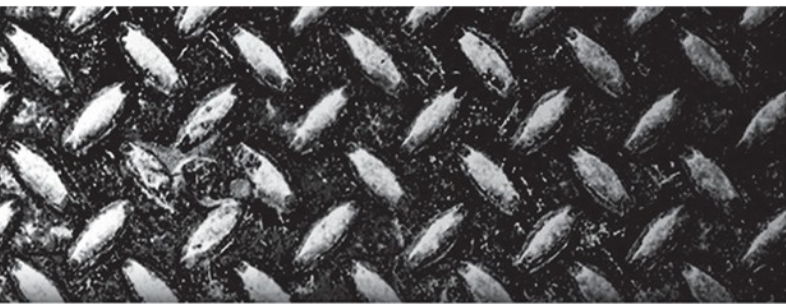
**WWW.FYR-TEK.COM ~ (800) 473-8903**



# HORTON TYPE I AMBULANCE



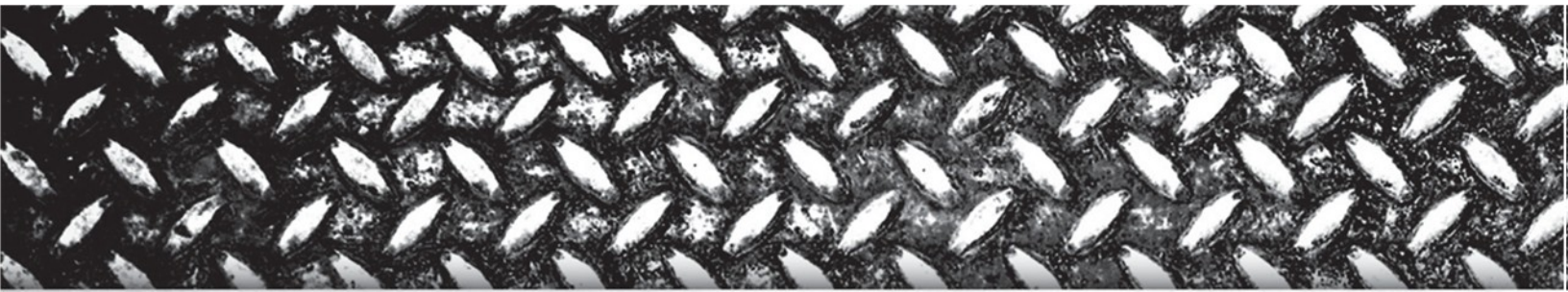




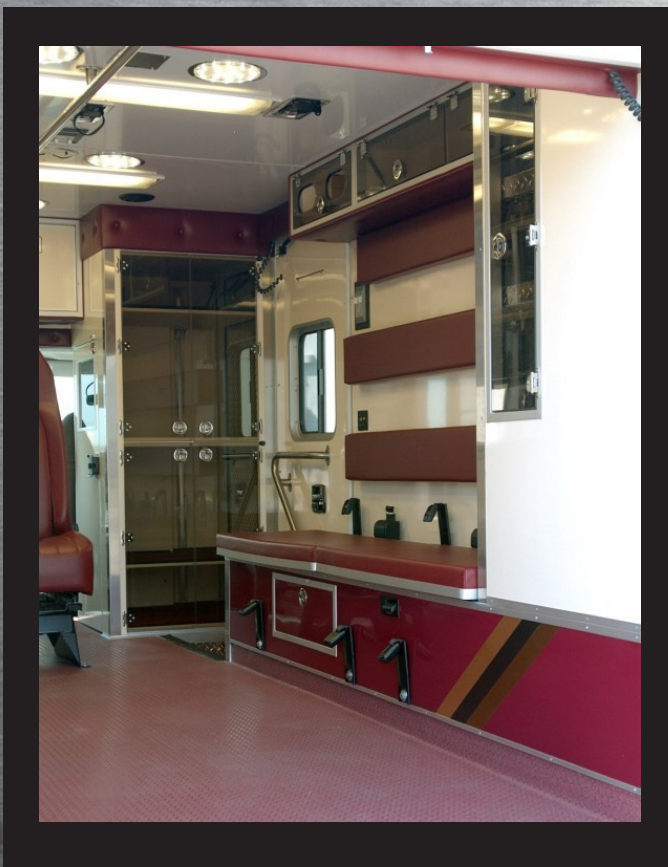
**THE HORTON TYPE I  
AMBULANCE HAS A  
FOUR WHEEL DRIVE  
OPTION AND  
FEATURES HORTON'S  
EXCLUSIVE HOPS AS  
A STANDARD. THE  
TYPE I HAS BEEN  
CONSIDERED THE  
WORKHORSE OF THE  
AMBULANCE WORLD,  
ESPECIALLY WHEN  
THE CALL IS FOR A  
FOUR-WHEEL DRIVE.**



# HORTON TYPE III AMBULANCE



THE TYPE III AMBULANCES HAVE THE COMFORT OF A CAR-LIKE RIDE, THE EASE OF A TIGHT TURNING RADIUS, AND THE MOST ADVANCED BIOHAZARD CONTROLS, SAFETY FEATURES, RELIABILITY SYSTEMS, ACOUSTIC AND THERMAL STANDARDS ON THE GASOLINE E-SERIES OR DIESEL CHEVROLET G-SERIES.









# HORTON AMBULANCE SAFETY

WITH AMBULANCE ACCIDENTS BEING MORE COMMONPLACE AND DEATHS BEING HIGHER THAN IN ANY OTHER PROFESSION, HORTON TAKES SAFETY VERY SERIOUSLY.

HYGEE SLED TESTING USES 20 TO 35 G'S TO TEST THE BODY OF EACH AMBULANCE



STATIC LOAD TESTS ARE PERFORMED TO TEST THE SEAT BELTS, DOOR LATCHES/HARDWARE, AND CABINETS





**THE HOPS (HORTON OCCUPANT PROTECTION SYSTEM) FEATURES AIR BAGS, PROGRESSIVE RESISTANCE PADDING, AND A THREE POINT RESTRAINT SYSTEM**



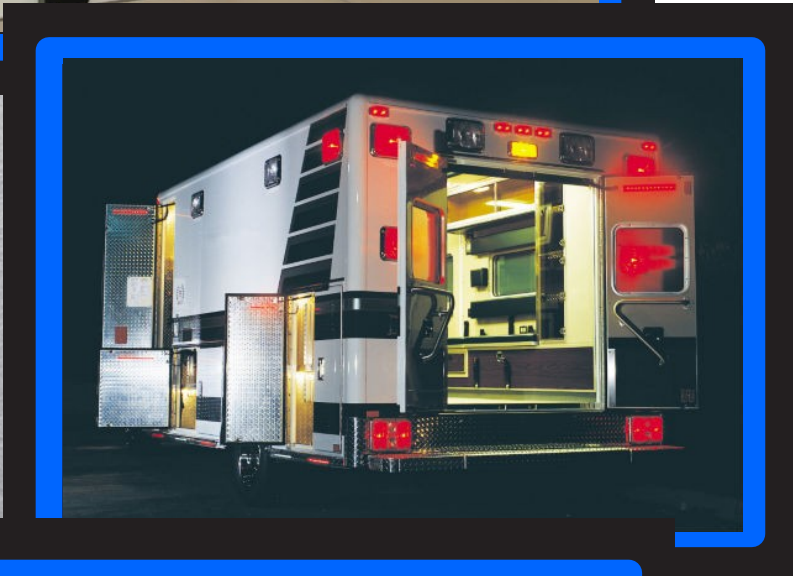
# HORTON AMBULANCE OPTIONS...



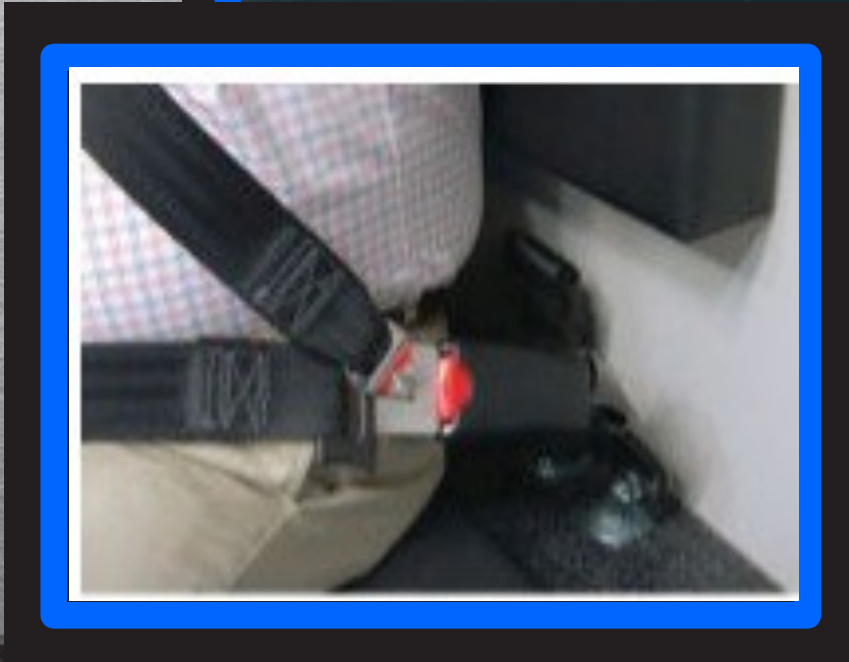




With just a push of a button, Horton's electronic privacy windows can go from opaque to clear!



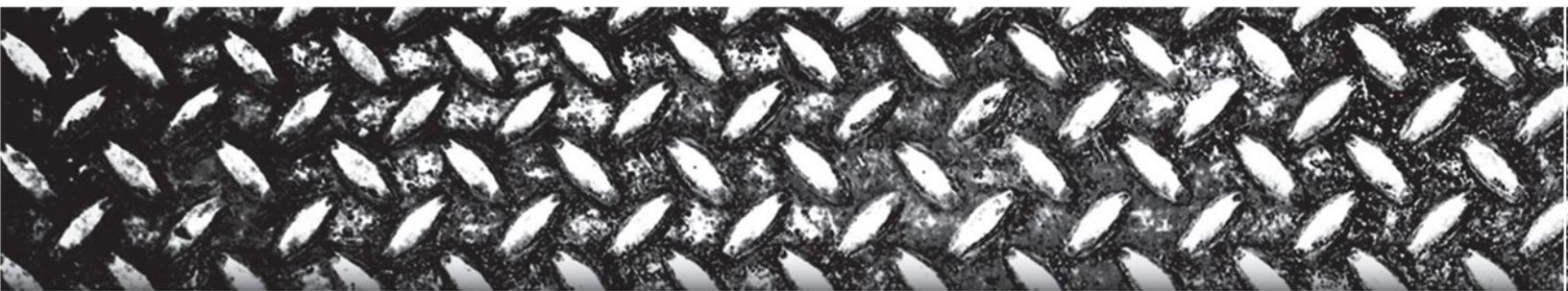
Silhouette lighting defines the outline of the ambulance, allowing you to work in safety



Horton's detachable three-point harness system & barrier seat bolsters. The detachable feature on the over-the-shoulder portion of the harnesses allows the EMT to access the patient without removing their seat belt.



# FIGHT AGAINST THE RISK...



**IN A PROFESSION WHERE DECONTAMINATION IS CRUCIAL, HORTON PROTECTS NOT ONLY THE PATIENTS, BUT ALSO THE EMERGENCY WORKERS BY ELIMINATING ALL ORGANIC MATERIALS THAT COULD HOST A CONTAMINATE. GRAB RAILS, CABINET PAINT, HEADLINER MATERIALS, AND MORE CONTAIN ANTIMICROBIAL PROTECTION.**

Antimicrobial protection is found in the durable powder coat finish that is put on both doors and overhead grab handles.



Whether you choose the standard stainless steel or the optional Avonite, both types of work surfaces eliminate seams and crevices that trap contamination.



# ...OF MICROBIAL CONTAMINATION



Once you've touched a switch panel with a bloody glove, how do you decontaminate it?

The answer lies in Horton's exclusive sealed switch panel that eliminates all gaps and crevices where the contaminants might collect. An antimicrobial coating is also applied to the exterior surfaces to kill any microbial residue.





**FYR-TEK**

**PROUDLY  
PROVIDING  
HORTON  
AMBULANCES!**

**715 4TH STREET  
GOTHENBURG, NE 69138  
(800)473-8903**



**[WWW.FYR-TEK.COM](http://WWW.FYR-TEK.COM)**